

# Project management software



## CONTENTS

### 3 What is Blue Ant?

- 4 Key features overview
- 5 Portfolio management
- 11 Project management
- 15 Resource management

### 21 Why Blue Ant? 5 good reasons

- 22 1. Costs
- 25 2. Quality
- 28 3. Overview
- 31 4. Flexibility
- 33 5. Integration

### 36 Users

### 37 Editions – the right solution for your company

- 37 Standard edition
- 38 Enterprise edition
- 38 Cloud edition

### 39 Architecture

- 39 System requirements
- 40 Technology

### 41 Interfaces

### 43 Blue Ant service

- 44 Training
- 44 Consulting
- 44 Support

### 45 References

### 47 Insights

### 49 White papers



# What is Blue Ant?

## › Clever interaction of portfolio, project and resource management

Blue Ant professionalizes your company's multi-project management through the efficient interaction of individual project management, resource management and portfolio management. All projects and their resources can be managed in real-time, company-wide or within the framework of portfolio and program manage-

ment. Multi-project management information is based on current or planned projects and their resource use. This simplifies and accelerates your coordination and reporting processes and increases transparency for the right decisions.

## KEY FEATURES **OVERVIEW**

### Portfoliomanagement

#### Do the right projects!

Blue Ant helps you strategically align your project portfolio. Define key figures, create different scenarios & monitor performance. Create the basis for uniform reporting of all your projects.

### Projektmanagement

#### Doing projects right!

Blue Ant supports your project management with templates for planning and control. Manage all projects transparently using freely definable decision points from idea to completion. Benefit from clear controlling performance indicators for costs, resources and time.

### Ressourcenmanagement

#### The right people, the right time, the right project!

Manage your company's capacities with Blue Ant and balance them between projects and operational topics. Simulate potential projects and their impact on business units, taking required skills into account. Use approval processes to reliably distribute resources between your projects.

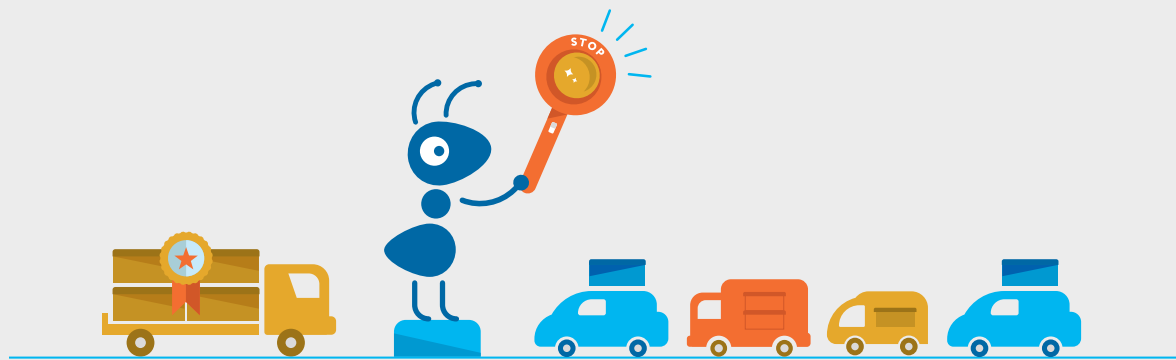
### Project Management Office

#### Tools, Workflow, Information

Centrally organise the various life cycles of all your projects, including approval procedures. Provide a framework for the planning and controlling of your projects. Maintain an overview of resource utilization and create reports for management at any time at the push of a button.

As an integrative solution, Blue Ant project management software allows you to monitor your projects, resources and budgets with ease.

# PORTFOLIO MANAGEMENT



## > Do the right projects!

Projects play an important role in keeping an eye on company objectives. Prioritization helps to ensure that less important projects and day-to-day business do not jeopardize these aims. Blue Ant project portfolio and program management help you structure and monitor all projects and measures running wi-

thin the company. Thanks to the close interlinking of the project portfolio with individual project and resource management, you no longer lose sight of your goals.



Controlling



Administration



Portfolio



Program



Simulation



Project life cycle



Reports



Interfaces

## Portfolio and program management

Define your own portfolios and programs by adding individual colours and expanding your master data with your own key figures and properties. You can flexibly manage all necessary portfolio information in a central location using individual fields

and screens. By defining different project types and project life cycles, uniform processes can be controlled from the creation to the completion of a project.

## Portfolio and program managers

Assign individuals or entire teams to a portfolio or program. In doing so, you can define the rights within the portfolio down to project level. This makes it easier for the individuals responsible to

navigate from the bird's eye view of the portfolio down to the individual projects and their activities.



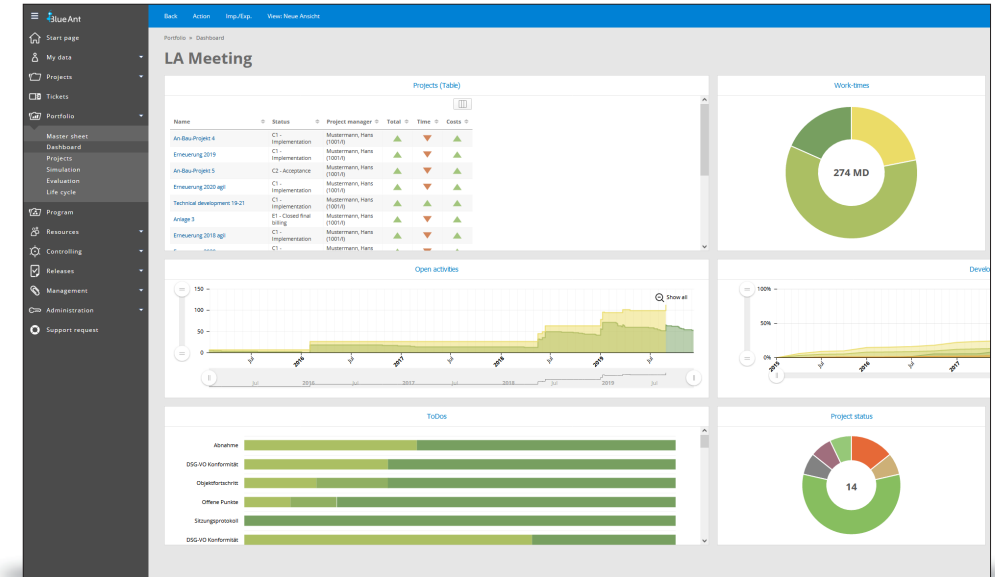
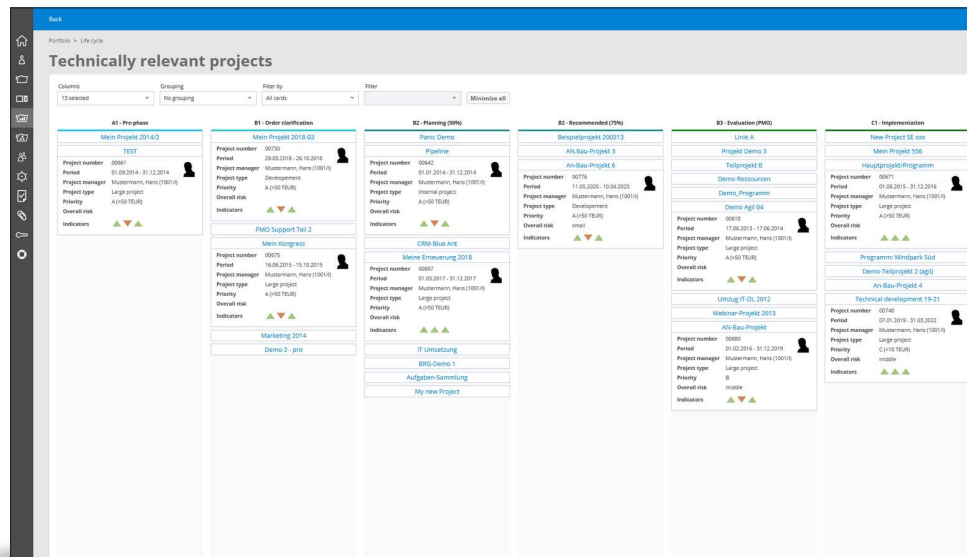
## Swift structuring of your project landscape

Blue Ant supports you by quickly structuring your project landscape. Define portfolio and program and assign your projects. This means that you always have an overview of all current and upcoming project topics and their criticality when the number of projects increases.

With drag & drop, you can change the composition of your portfolio. You can edit the central specifications, such as project run times and dates, or project status, directly in the project overview.

Portfolio and program simulation allows you to run through any scenarios of project priorities, time sequences and resource requirements you wish. The workload of teams and individual knowledge carriers is taken into account.

Graphical dashboards summarize the project complexity and give you simple indicators of necessary interventions.



## Customized reporting

Ad hoc reports can be created at the touch of a button from the project overviews. For example, view the individual dashboards of all your assigned projects. You can also use the integrated report generator to create presentations directly from the portfolio or program.

Blue Ant connectors and web services allow you to exchange or synchronize project data with external systems.



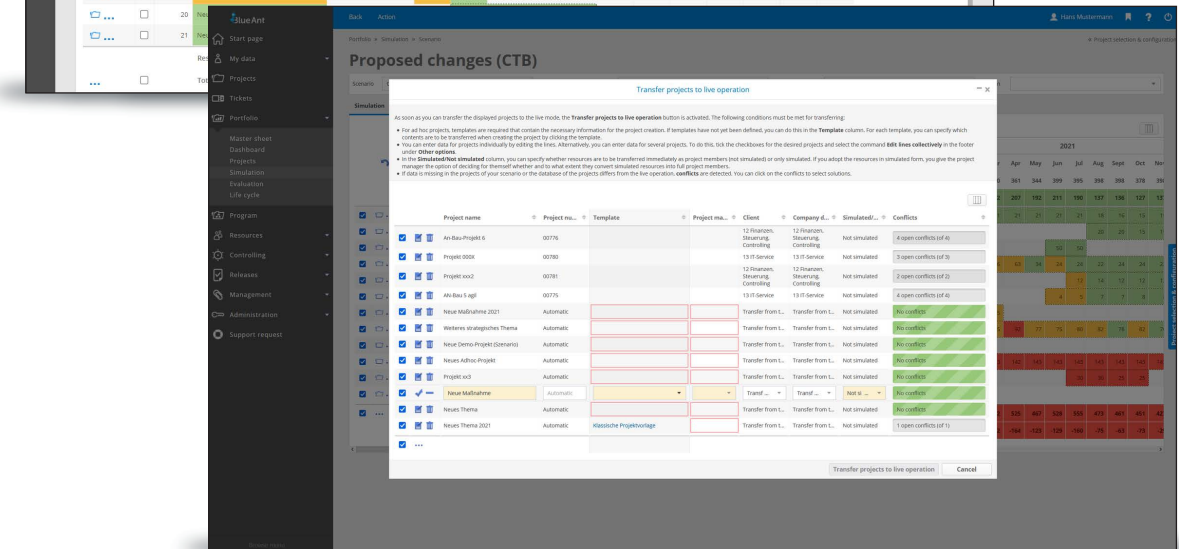
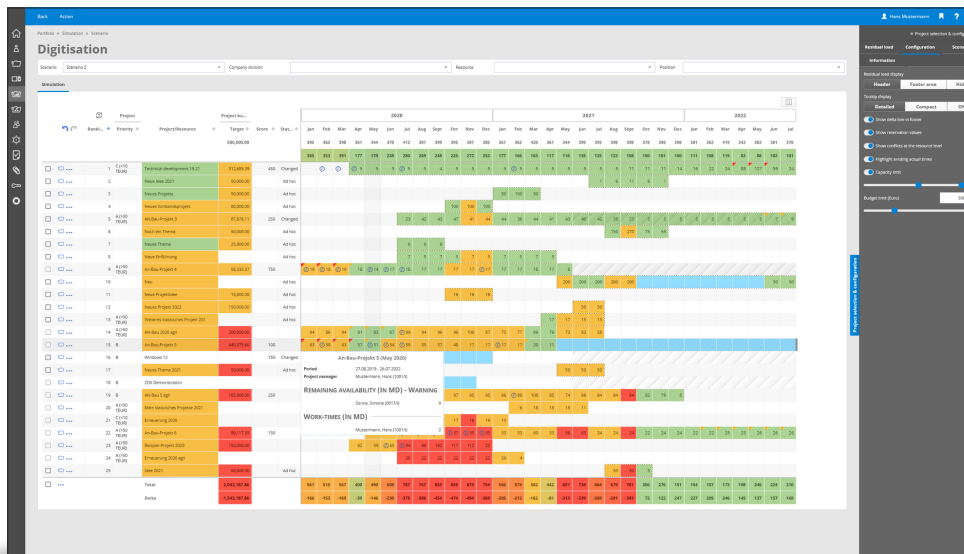
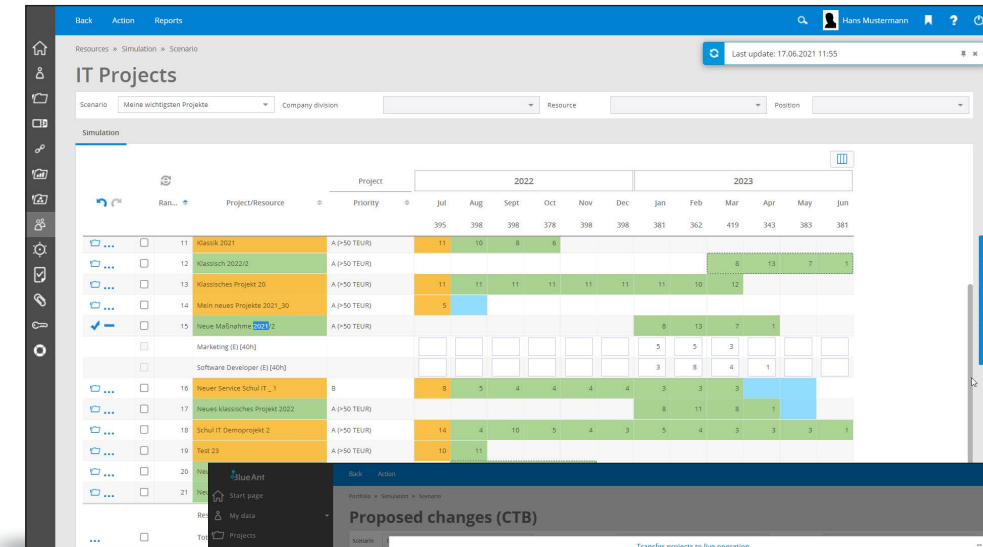
## Simulation

What if...? Don't guess, simulate! Use portfolio simulation to determine your project strategies. Which projects, with which budget and which resources should be implemented in what order? Even better if you can effortlessly run through every conceivable scenario before you make a decision.

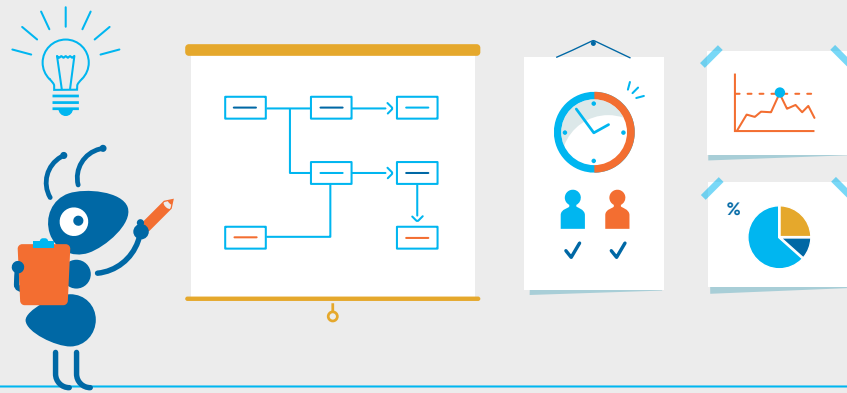
The simulation module allows you to create any number of scenarios in parallel and replicate different project priorities, times and capacities. The

effects of all scenarios can also be visualized at departmental and resource level.

Once the final decision has been made, a scenario can be transferred into the ongoing project management. All other projects are realigned accordingly.



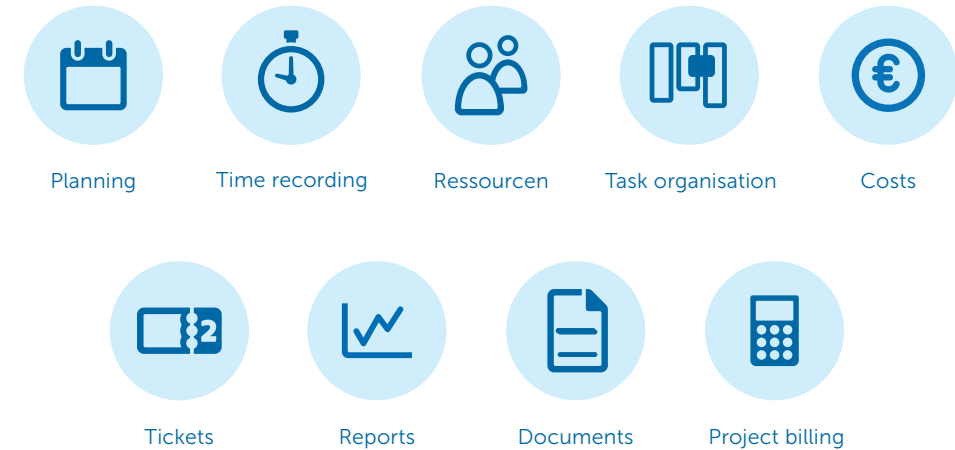
# PROJECT MANAGEMENT



## > Doing projects right

The success of a project depends mainly on the project's stakeholders. This makes it all the more important to support project participants by firmly defining the standards and principles of project management and applying them to all projects. A clearly structured set of methods and tools also

provides the project team with security. The integration of all the individual projects in a transparent and uniform reporting system provides the basis for benchmarking the projects. Imbalances in the project can therefore be quickly identified and corrected.



## Projects and line activities under one roof

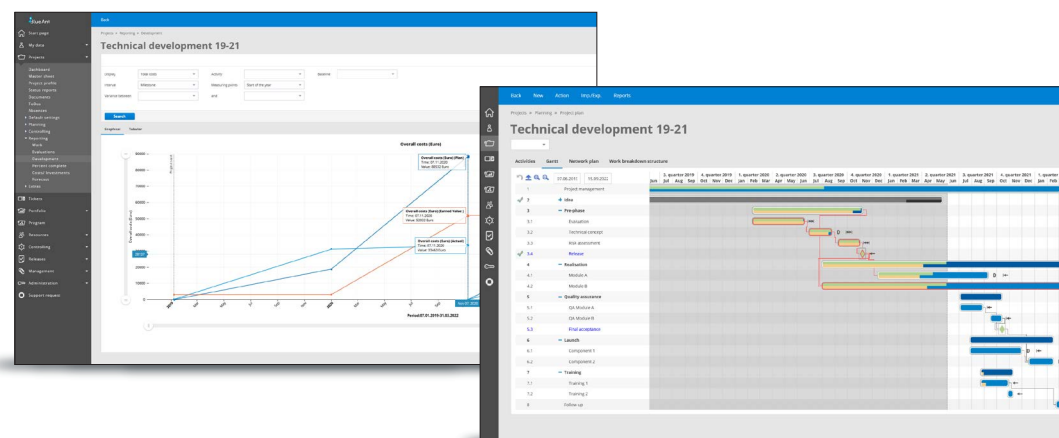
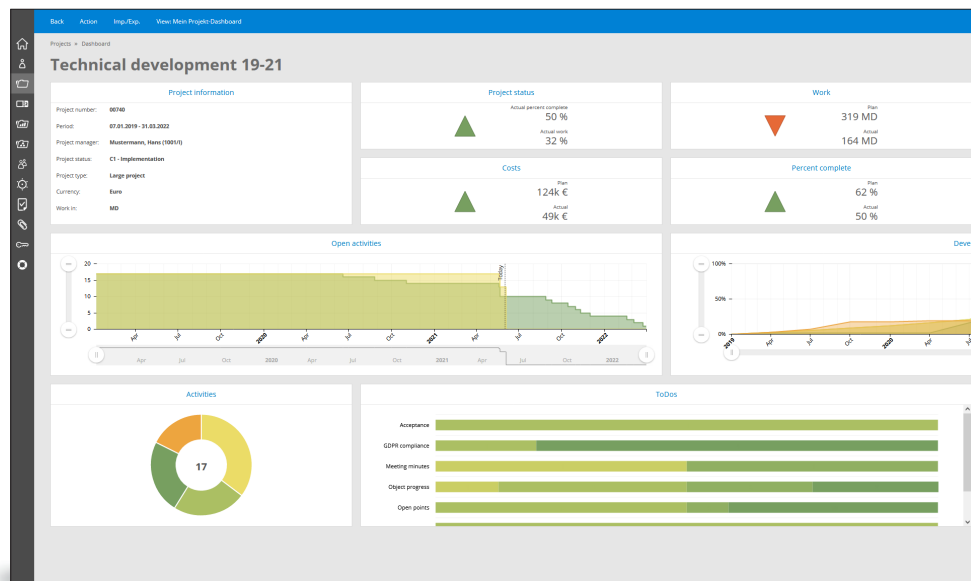
Support your individual project management with project templates, ToDo lists, ready-made reports and status reports, plus consistent review and approval processes for working hours, absences and resources,

for example. Special measures and line tasks can be easily managed alongside normal projects.

## Activities, ToDos and Tickets

Whatever the requirements of your projects, Blue Ant provides the right solution. Create classic or agile project plans for major tasks and use project checklists with ToDos for your micro-tasks. For tasks with an initially unclear status (project or line) and for change requests and support requests, simply

use the Blue Ant ticket system. Activities, tickets or ToDos can be combined with each other, all the while supporting maximum transparency in resource sharing.



## Standardization and acceleration

Significantly speed up project creation by using project templates. In a few clicks, your project file will contain activities, Todos, documents and costs. This ensures a coherent structure for your projects and gives inexperienced project managers important points of reference.

From the initial project idea to implementation, Blue Ant pictures the whole project life cycle, defining a clear order. Decision-makers can always be involved and processes are further optimized.

Clear status report guidelines help you create and submit status reports on time.

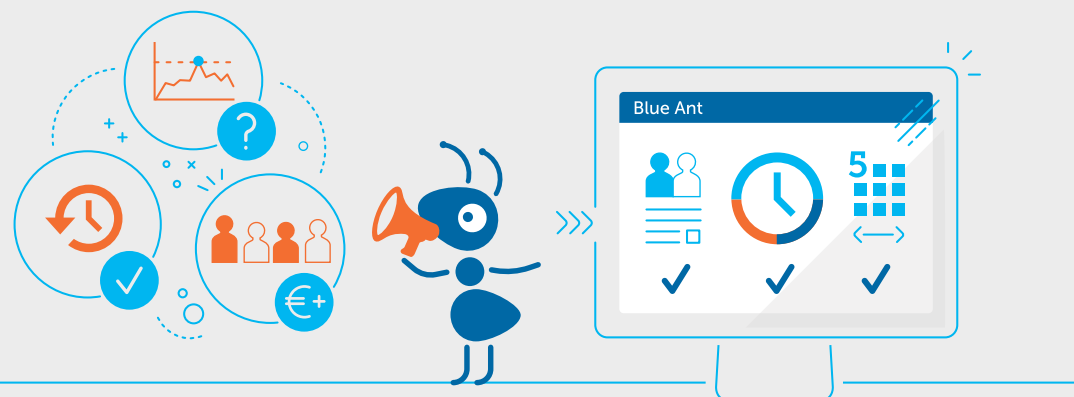
## Costs, revenue, earned value and more

Allocate budgets for different cost types and then compare target values with the planned values of the projects. Manage quotes and payment terms and evaluate the project revenue with cost-to-cost or earned value methods and defer on an exact monthly basis.

You can record, release, and book all actual costs to the projects directly using the time recording in document management in Blue Ant.

Using a variety of interfaces in Blue Ant, you have the option to exchange costs and revenues with external systems or generate accounting records directly.

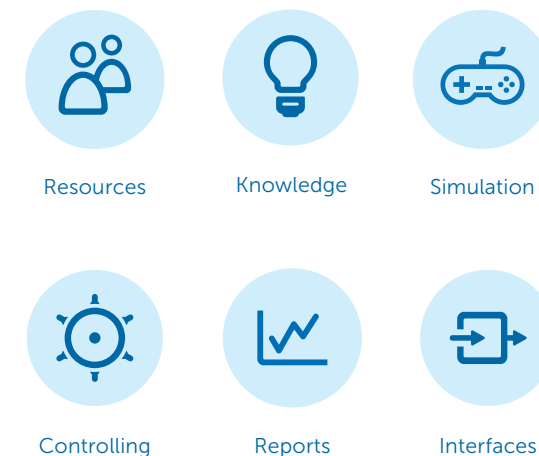
## RESOURCE MANAGEMENT



### > The right people, the right time, the right project

Daily company business involves continuously implementing a number of high priority projects. This has consequences for both single and multi-project management. For example, if the parallel utilization of resources in different projects is not transparent, all project plans, in which this resource has been planned, are unrealistic. This reduces the motivation to plan at all, and

the projects are instead driven from week to week. Regulated resource management can be surprisingly straightforward, however. Who does what and when? Blue Ant knows the answer and provides additional background information on potential bottlenecks in particular departments or the distribution of capacity between line and projects.



### Central management for all resources

All internal and external employees or service providers are managed centrally in Blue Ant. The connection to an LDAP server or another central employee database enables the ongoing synchronization of all employee data, including public holidays, leave entitlement, work-time models, internal costs, line managers and qualifications.

Historicizing costs, holidays and public holidays provides a robust platform for all projects, even with frequent changes. Individual data fields and masks allow the extension of employee records.







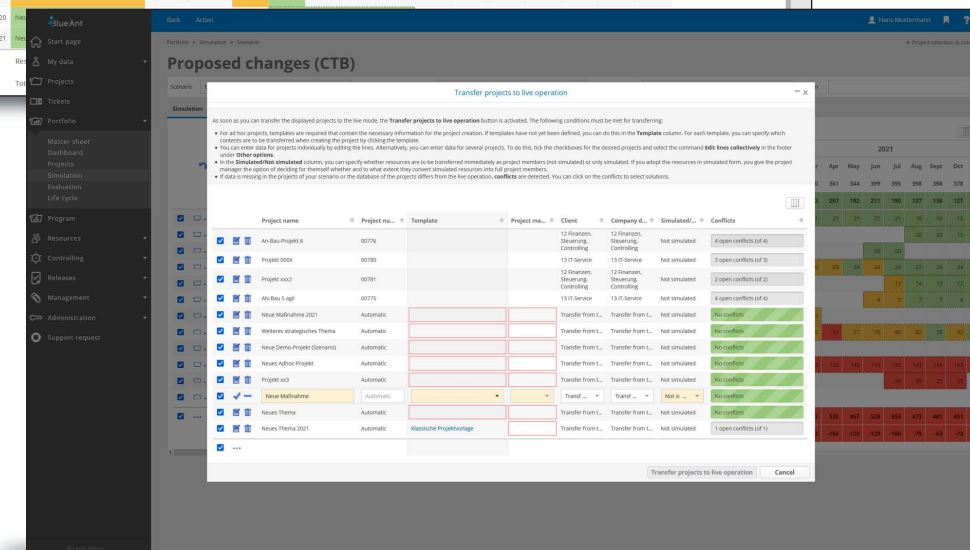
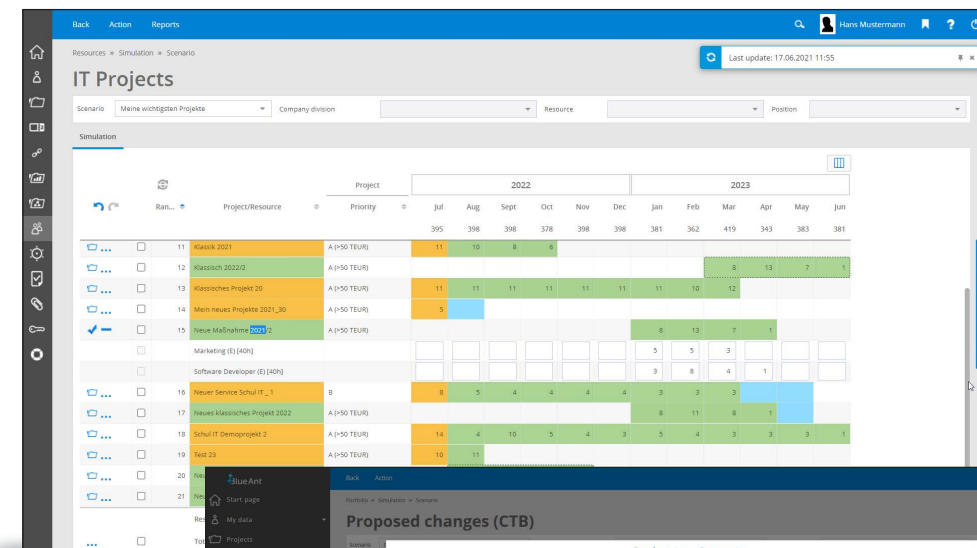
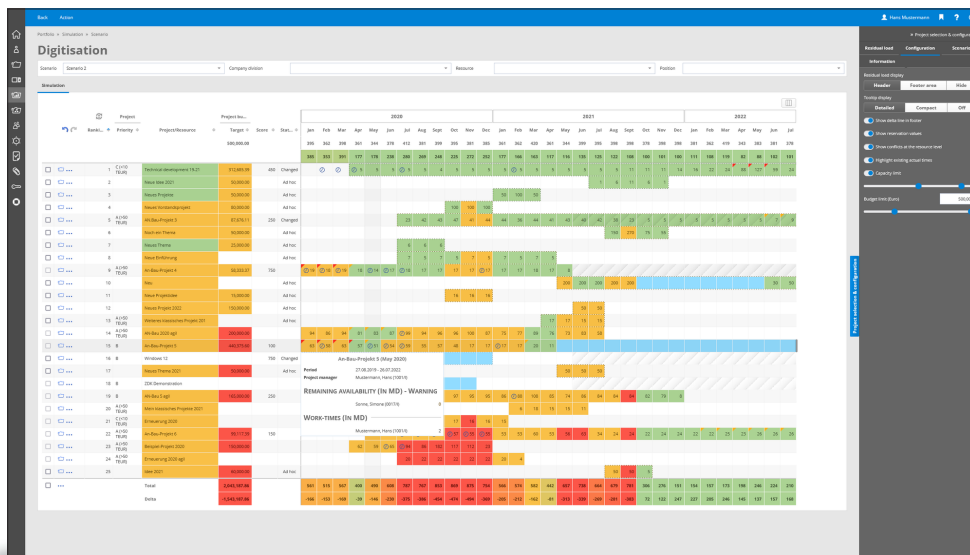
## Resource simulation

Identify and avoid bottlenecks. When planning and prioritizing new projects, resource management provides important parameters for decision-making. So, in addition to the question of anticipated costs, the question of resources and their realistic availability is part of strategic planning.

Ignoring bottlenecks on the drawing board leads to an indistinct project landscape in which planning makes little sense and fails to guarantee the provision of the necessary resources.

For this reason, the requirements situation of the line and of all ongoing projects must be taken into account, especially when determining the project portfolio. Of course, bottlenecks can be quickly eliminated by giving a project a higher priority.

However, this creates bottlenecks in other projects. With Blue Ant project management software, you can monitor these dependencies constantly.



# Why Blue Ant?



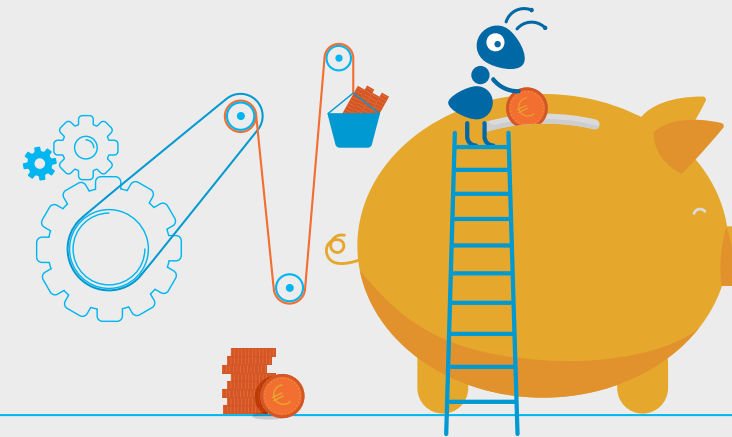
## 5 good reasons

Discover the advantages of Blue Ant in detail.

**NORMAN FRISCHMUTH**  
Managing director, Hypergene GmbH

»» There are 90+ man years of practical project management experience in Blue Ant. We have distilled the most successful methods into a software solution which will advance your projects. ««

## 1. BLUE ANT REDUCES YOUR COSTS



### » Cost-saving infrastructure for your multi-project management

Project management does not come for free. This makes it all the more important to keep an eye on all costs at all times and to keep administrative management costs as low as possible. This can only

be achieved without lowering quality requirements by efficiently interlinking the planning and controlling processes of all projects. Blue Ant provides the perfect platform for this.



Kanban boards  
& ToDo lists



Controlling

## Fast coordination and information processes

Uniform and partially automated processes speed up coordination and reporting processes and reduce the ongoing, administrative costs of your project management by up to 50%. So, you can use the capacity gained in this way for more productive tasks. The monthly creation of a status report can cost a project manager one or two hours - every month and for every project. If in your company, for example, 20

projects are running in parallel, this means a time investment of up to 40 hours per month and 480 hours per year. Use Blue Ant to reduce this process to 15 minutes per project. This results in enormous potential savings from this process alone.

## Cost-saving data consolidation

Further time-consuming activities include releasing working hours, coordinating and approving holidays, requesting and billing travel expenses, and the initial creation of a project, as well as collecting project data for an overall capacity view or forecast data for

the cost and revenue planning of the projects. All these processes can be accelerated with Blue Ant and done from one place. All data flows into Blue Ant as a multi-project management centre.



## Cost-effective operation

Blue Ant offers extremely cost-effective operation compared to classic ERP systems. You can perform all administrative activities yourself. If you also use the Cloud version, all internal hardware and support expenses are eliminated. With the monthly Cloud

fee you purchase the complete service (hosting, update service and data backup).

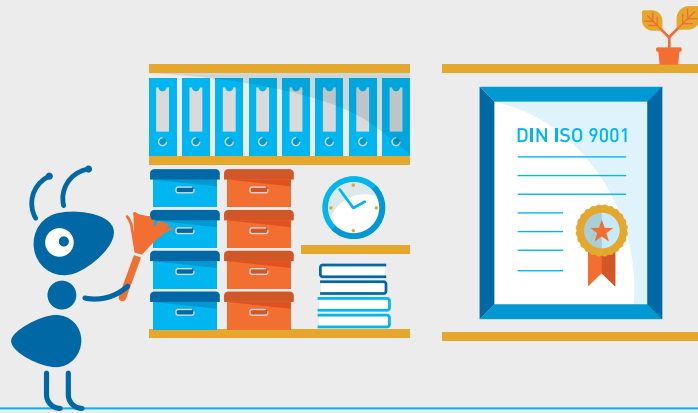
## Outstanding value for money

Blue Ant is a professional multi-project management solution that already includes a variety of additional products.

In addition to the core modules for project and multi-project management, you also get:

- › Work- time recording and management
- › Holiday management
- › Ticket management
- › Travel expenses management
- › Report generator
- › Receipt recording

## 2. BLUE ANT INCREASES THE QUALITY OF YOUR PROJECTS



### > Project quality through standardization and formalization

Framework and target conditions of projects are often more complex in practice than originally assumed. So, it is all the more important to keep an eye not only on times and costs, but on project qua-

lity, too. For project quality to develop, a framework must be created that includes clear structural specifications and established control mechanisms. Blue Ant provides you with this framework.



Planning



Time recording



Kanban boards  
& ToDo lists

### Project quality right from the start

Using project templates, you can establish a structured framework that allows you to set up new projects more quickly. In Blue Ant, create project templates which include your working practices, project processes, project task structure and corre-

sponding project documentation. Using this form of project collaboration, you reduce the administrative effort of each employee while maximizing performance.

### Standardized and comparable status reports

Well-structured status report templates are filled autonomously using all available project information. The project managers themselves only have to evaluate and comment on the project status. This increases the data quality and unburdens project participants. You also ensure

punctual delivery of status information from all projects with reminder functions and automated delivery processes. This greatly increases the quality of the management's decision-making process.

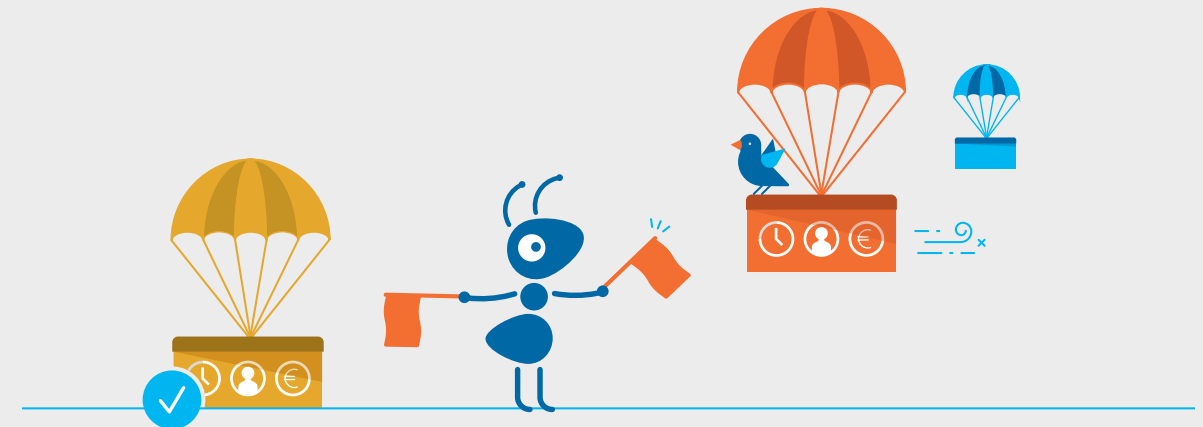


### Stable work-flows for all projects

Define uniform procedures in the project life cycle for each project category. From project idea to billing, you define individual statuses and decision-making bodies. Automated notifications ensure that all parties involved are informed of changes in the project status and any decisions taken.

This process supports you in monitoring the entire project landscape and is, for example, an important basis for the certification of your company according to DIN ISO 9001.

## 3. BLUE ANT GIVES YOU AN OVERVIEW



### > Everything in view with Blue Ant

Every action requires knowledge. You can only make correct, well-timed decisions if you know the status of your projects. Blue Ant gives you a quick, but thorough insight into your project landscape. You can gain an overview of the status of all ongoing projects at the push of a button. Or get a summary of the planned resource utilization in the coming 12 months. This information will help you prioritize your projects and find answers to important questions. Are we implementing important pro-

jects or are we concentrating too much on existing issues? How innovative is our current project landscape and what are the risks? Can we tackle the new customer project or do we lack the necessary resources?

These and many other questions are answered by Blue Ant using information from portfolio, project, and resource management.



As of 2013, Hypergene GmbH is ISO certified for:

- ✓ Development and implementation of the multi-project management solution, Blue Ant
- ✓ Software development on behalf of customers
- ✓ Consulting in the field of project management



Portfolio



Controlling

### 360 degree reporting for your projects

Define different user groups, which have an individual view of the projects, depending on their focus. The portfolio manager, for example, manages all risk-relevant projects. The program manager will ensure the smooth implementation of your new product strategy over the next five years.

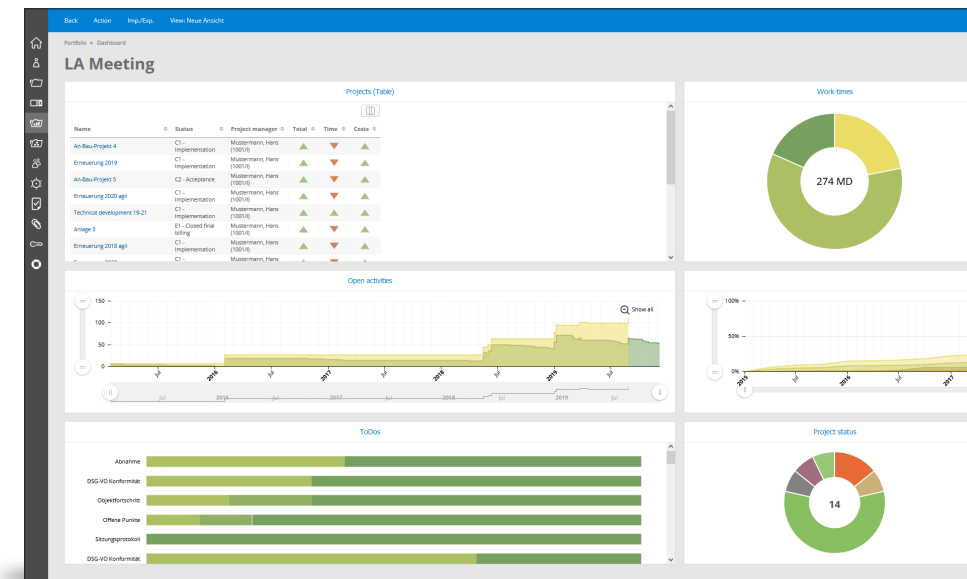
The main project manager controls all subprojects of his/her large project and the individual project manager manages his/her project.

All project participants use and share the same data but have a very individual view of their projects.

### Transparency with a sense of proportion

Restricted transparency is always required where data protection requirements arise, and should be tailored to the profile of the user. Blue Ant rights management saves you a lot of work by making it easy to control access to project data using the organization chart. In addition, screens and fields in Blue Ant can be user-defined and hidden.

Sensitive data, such as absences or working hours, can be completely screened or partially anonymized according to the user.

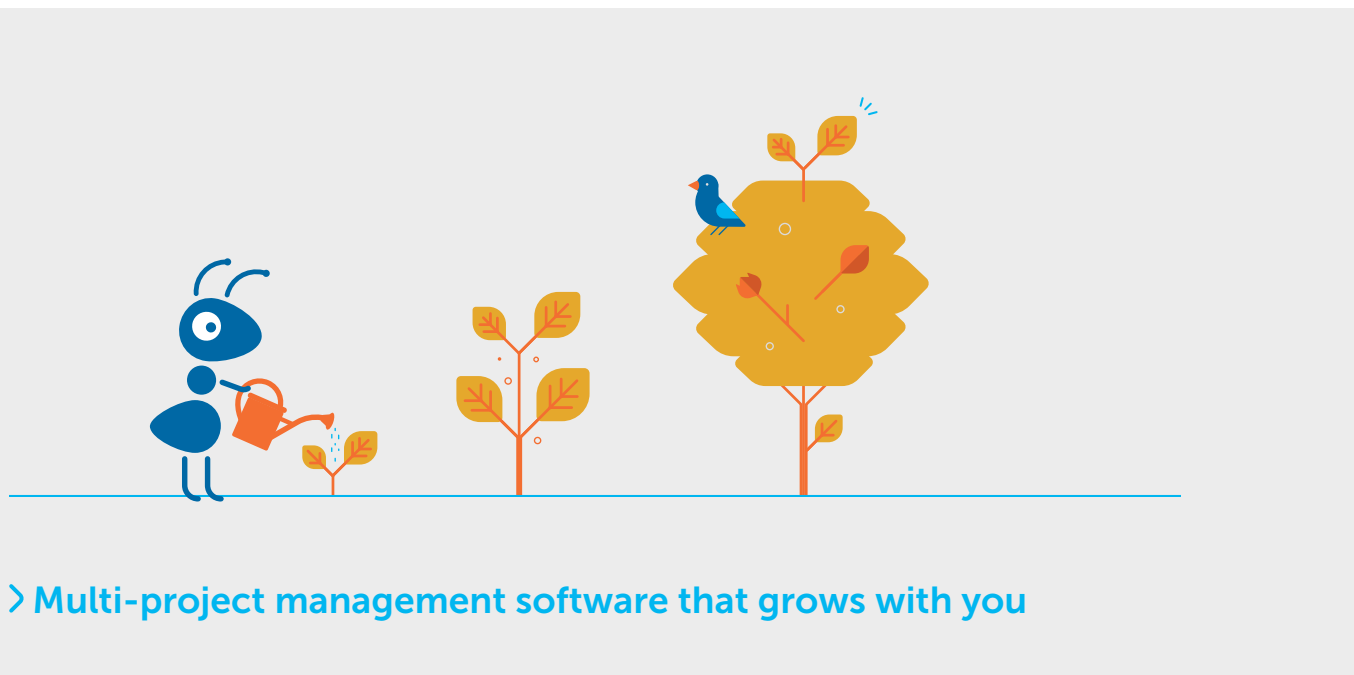


### Mass data always at hand

Multi-project management involves a wealth of data. Blue Ant supports you with automatic compaction and processing and converts data into helpful management information. You can generate

frequently used key figures on a daily basis and use them for your reporting using batch jobs.

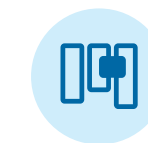
## 4. BLUE ANT ADAPTS TO YOUR NEEDS



### › Multi-project management software that grows with you

Change is ever-present in business life. So, established multi-project management should be able to adapt to innovation in the company. This is the only way to ensure that multi-project management applications are used in the long term and stand-alone solutions

are avoided. Blue Ant multi-project management software meets this challenge and adapts flexibly to any business situation.



Kanban boards  
& ToDo lists



Controlling

### Step-by-step multi-project management professionalization

Are you just beginning to professionalize your (multi-) project management? Then use Blue Ant as an access point and expand the functionality of our software as soon as the complexity of your project processes increases. Blue Ant can be individually adapted to your specific business situation. For example, start with simple project management and project processes without time recording. In the next step, switch to time recording and project resource management. Take advantage of

the complexity of project portfolio management and program management, and then connect your ERP systems to Blue Ant.

With this flexibility, you minimize implementation and training costs simultaneously and increase the overall acceptance of project processes and multi-project management software in your company.

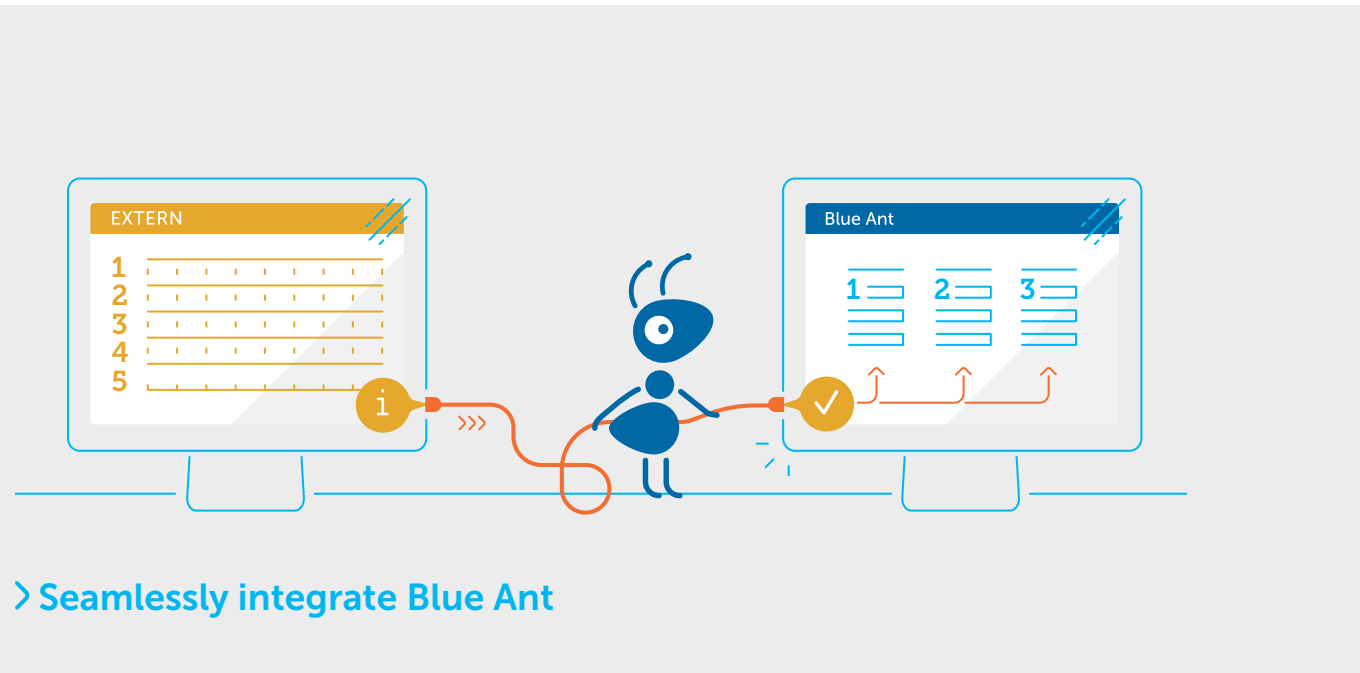
### Adapting to the needs of project participants

Do you employ project managers with different background skills, whose qualifications you would like to support? Blue Ant's sophisticated rights and roles system facilitates this by providing a very individual set of functionalities and views.

This flexibility does not incur any additional costs, as each Blue Ant license always includes the full functionality for each of your users.



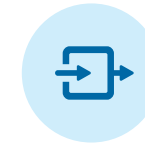
## 5. BLUE ANT MAKES INTEGRATION POSSIBLE



### > Seamlessly integrate Blue Ant

Project management is a team discipline. This applies to both human and technological cooperation. In project management in particular, numerous software products and applications are

used which must exchange data and information. Blue Ant facilitates the seamless integration into your company's existing IT systems necessary for this cooperation.



Interfaces



Administration

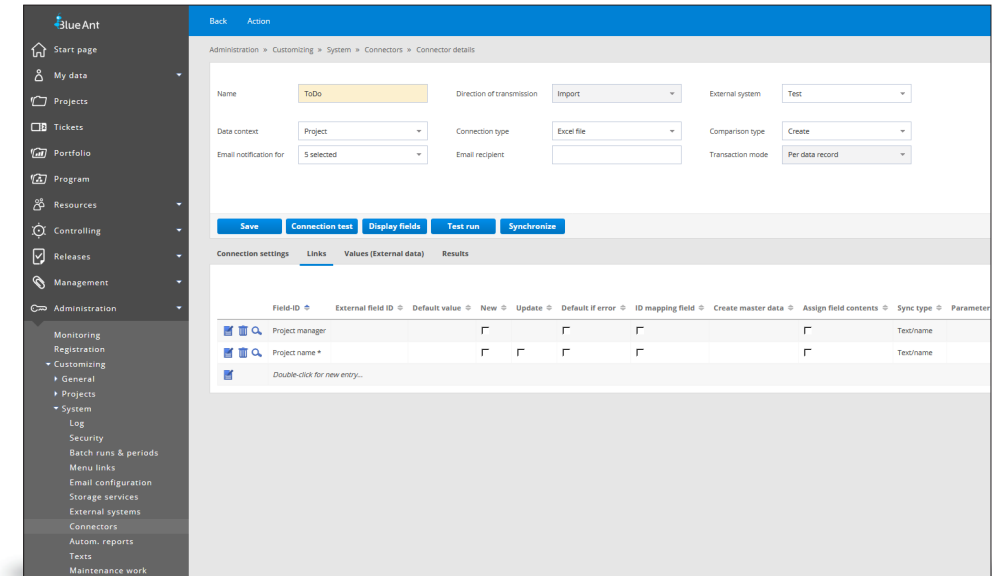


Add-ons

### Import and export of project data

Import or export project data, such as project costs, working hours, or project activities, at the push of a button. Import templates can be used to

assign imported data to specific Blue Ant database elements at any time.





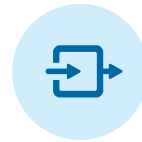
Project billing



Controlling



Portfolio



Interfaces

### Plug-ins for greater convenience

Project activities can easily be exchanged between Blue Ant with MS Project or MS Excel. This allows a swift and uncomplicated transfer of project data.

You can also connect activities to Jira and record working hours in Jira for Blue Ant.

### High-level-connectivity

Blue Ant connectors provide automated synchronization of project and employee data with a third-party database or other data source. The LDAP connection provides central rights and

security management. The SSO functionality reliably integrates our multi-project management software into your IT security landscape.

### Real-time connection without detours

Using Blue Ant web services, you can control Blue Ant externally, access functions or exchange data. Create projects with all their information and

assign work-times, for example. It is also possible to develop your own additional add-ons at any time.

# Users

> Transparency and communication:  
Optimally integrate project participants



The more participants involved, the higher the risk to the communication, exchange of information and transparency. Blue Ant counteracts this by taking over the meaningful organization and factual presentation of information.

### Support for your project team

- ✓ Management
- ✓ Project manager
- ✓ Portfolio manager
- ✓ Resource manager
- ✓ Project team
- ✓ PMO
- ✓ Controlling

# Editions

## > The right solution for your company

Every company has special requirements for its project and resource management. So Blue Ant

offers three professional solutions, tailored to fit your individual needs.



### Standard edition

Blue Ant Pro Edition offers the perfect start for small and medium-sized businesses from 25 users with up to 200 users.

It contains the basic functions, has the tried and tested rights management, and administrative access to customising. The additional Project portfolio, Project program management and

Ticket system modules are available as options. The Standard Edition allows you to manage know-how with knowledge maps to optimise resource planning, calculate project quotes, and record and bill expenses.

An upgrade to a higher Blue Ant Edition is possible at any time.

### Enterprise edition

Blue Ant Enterprise Edition provides small to medium-sized businesses and corporate departments with up to 1500 users with a professional multi-project management platform with integrated resource management.

It contains all the features of all Blue Ant function modules, has the tried and tested rights management, and administrative access to customising. In addition, the Enterprise Edition has open interfaces (web services) and single

sign-on functionalities for seamless integration into your existing IT environment. All release and approval processes are fully-configurable and ensure optimum integration into the management processes of your business.

On request, Blue Ant Modules can be additionally adapted to your individual needs or supplemented with custom modules.

### Cloud edition

Blue Ant Cloud Edition is a hosted solution suitable for all companies who want to use their multi-project management platform as an internet service.

Here users can use the full functionality of the Standard Edition as well as all open interfaces (web services). Using the Cloud Edition will save on your hardware infrastructure and the technical administration of the system.

You also have the option of adding the "Project portfolio management" and "Project program management" modules, as well as the "Ticket system" module.

# Architecture

## > Modern standards for simple integration

### System requirements

#### Server

##### Operating system

- > Windows from 2016 server 64 bit
- > Linux 64 bit
- > Unix 64 bit

##### Database system

- > Oracle from version 19
- > MS-SQL server from version 2014
- > PostgreSQL from version 12 (recommended for best performance)

##### Web server

- > Apache/Tomcat 9

##### Run-time environment

- > Java SE Development Kit (JDK), Version 17 (Oracle or OpenJDK)

##### Hardware

##### Approx. 50 users:

- > 2,8 GHZ Quad-CPU or higher
- > 128 GB SSD/RAID or similar
- > 8 GB RAM or higher

##### Approx. 200 users:

- > 3.2 GHZ Quad-CPU (2x) or higher
- > 256 GB SSD/RAID or similar
- > 16 GB RAM or higher

##### Approx. 500 users:

- > 3.2 GHZ Quad-CPU (2x) or higher
- > 256 GB SSD/RAID or similar
- > 20 GB RAM or higher

##### Network

- > Minimum 1 Gbit/s

##### Client

##### Web browser

- > Google Chrome current version
- > Mozilla Firefox current version
- > Microsoft Edge
- > Apple Safari current version

##### Monitor resolution

- > 1.920 x 1.080 pixels recommended



### Technology

#### Multi-lingual basic system

- > XML/XSL parser for generating HTML, PDF, CSV
- > Session management (memory and user control, auto logout)
- > Navigation via browser (menu, favorites, help, login/logout)
- > Integrated report generator
- > Data export/data import (XML)
- > High security standard
- > Configuration via browser

#### Rights management

- > Definition of rights profiles down to screen element level (screens, entry fields, buttons, navigation)
- > Assignment of rights for groups and users

#### User management

- > Automised registration
- > Group management
- > User monitoring (view of active users)
- > Definition of user profiles
- > Matching with LDAP/AD server

#### Master data management

- > Customizing of all master data via browser
- > Management of master data in multiple languages
- > Definition of your own screens and fields

# Interfaces

## > Integrate flexibly & manage easily

Multi-project management and resource management live from data exchange. The data source should not matter. Blue Ant provides interfaces that guarantee this exchange of data.



### AVAILABLE INTERFACES

	Standard edition	Enterprise edition	Cloud edition
<b>Plug in</b> for MS Project	●	●	●
<b>Export</b> of all data to PDF, HTML and MS Office	●	●	●
<b>SWOT</b> interface for quotes and plan and actual data	●	●	
<b>Import/Export of activities</b> incl. individual fields (MS Excel)	●	●	●
<b>LDAP/Active Directory connection</b> > Resource data and company divisions > User groups and authentication	●	●	●

● optional



### AVAILABLE INTERFACES

	Standard edition	Enterprise edition	Cloud edition
<b>Azure Connect</b> for resources and user data	●	●	●
<b>SSO access</b> via Windows domain with NTLM2	●	●	
<b>SSO access</b> via SAML 2.0 with AD FS or Kerberos 5	●	●	●
<b>Blue Ant Connect</b> Connectors for relational databases, MS Excel, CSV files, SAP, Navision, Sage, DATEV and many more for the	●	●	●
<b>&gt; Import of:</b> Absences, Quotes & quote items, Work-times, Team resource work-times, Receipts, Users and user groups, Budget targets, Individual risks, Clock in & out, Resources / Contacts, Organisation charts, Planned costs, Projects, Invoices, ToDo lists incl. ToDos, Companies			
<b>&gt; Export of:</b> Absences, Quotes & quote items, ork-times Receipts, Individual risks, Resources / Contacts, Planned costs, Projects, Invoices			
<b>Jira Connect</b> for Cloud, Server, Data Center	●	●	●
<b>Web Services</b> (SOAP / REST)	●	●	●
<b>External links</b> to Blue Ant functions	●	●	●
<b>Integration option for blogs,</b> wikis, forums and other web applications	●	●	●

● optional

# Blue Ant Service



**THOMAS EICHLER**  
Head of training & consulting

»» We provide you with PM know-how in the form of consulting, training and ongoing support so that you can concentrate on what's important: the success of your projects. ««

## Training

### Introductory training to make the start with Blue Ant easier

To introduce you to Blue Ant, we offer a variety of training courses. Are you interested in a Train-the-Trainer course with the aim of building a Blue Ant core team in your company? Do you want to get a more in-depth insight into the administrative part of Blue Ant or learn more about Blue Ant in an online training course? We can help you. Simply contact our sales team.

### User training to expand and consolidate your knowledge

General user training: if you already have project management know-how and are familiar with our multi-project management software Blue Ant, we invite you to take part in our regular user training courses, in which individual Blue Ant functionalities are presented and consolidated with exercises.

### Webinars on current Blue Ant topics

Our monthly webinars inform you quickly, effectively and flexibly about current project management issues, related to Blue Ant's PM functions. Our webinars are presented live on the Internet.

### Up-to-date with update training

At our monthly update training you will learn about what's new in Blue Ant. In brief hands-on exercises, you will learn how to use the new features, after which you will be able to take full advantage of the latest Blue Ant version.

## Parallel consulting

### Project management know-how through parallel consulting

We provide process-oriented and practical project management advice so that you can use Blue Ant optimally. In our Project Shops we offer qualification for project managers, employees and managers through training, consulting and coaching. In addition, Hypergene experts support you with PM consulting for your company-specific projects.

## Support

### Competent service

Purchase or Cloud customer - our trained support team will help you with any questions about Blue Ant. We ensure the technical availability of your system and provide on-site maintenance.

# References

## > Customers who trust us:

IT companies				
Consulting companies				
Industrial companies				
Public sector				
Banking and insurance				
Research and health				

With its resource and portfolio simulation, Blue Ant provides indispensable support in the planning and management of our projects.

**KATRIN WEINHOLD**  
IT Director at the AMEOS Group

The added value for the company and the individual management levels is immense.

**DAVID PRASKI**  
Finance & Controlling at the  
Wuppertal Institute for Climate, Environment and Energy

With Blue Ant project management software, we have a system in place that has enabled us to standardise our key processes.

**MICHAEL WEBER**  
Team Leader for Systems & Processes at BOSCH.IO GmbH  
(Software and Systems House of the BOSCH Group)

# The people behind Blue Ant

> An insight





# Project management knowledge

› Project management knowledge to download.



Read our white papers and expand your multi-project management knowledge.

Have a look at our current white papers:



## CONTACT

Do you have any questions about our products?

**Hypergene GmbH**

Head office, Berlin

Alte Jakobstrasse 83/84

D-10179 Berlin

Tel.: +49 (0)30 293 63 99-0

Fax: +49 (0)30 293 63 99-50

[blueant.de/en/](https://blueant.de/en/)

[contact@blueant.de](mailto:contact@blueant.de)

[blueant.de](https://blueant.de)